



GARMENTEC

WORK UNIFORMS & TECHNICAL WEAR

GARMENTEC.CO.UK



GARMENTEC

WORK UNIFORMS & TECHNICAL WEAR

WELCOME to the GARMENTEC technical wear product brochure.

Explore and be inspired by these **examples** of our bespoke technical clothing and equipment carriage solutions.

TECHNICAL



EQUIPMENT VESTS

MOLLEE VESTS	5 - 7
UTILITY WAISTCOATS	7 - 9
SPECIALIST VESTS	10
SECURITY TAC VESTS	28 - 29
RAIL VESTS	30 - 31
COUNCIL & PARKING VESTS	34
AVIATION VESTS	35
AMBULANCE & MEDIC VESTS	36
MISC. VESTS	37

TECHNICAL TABARDS

SPECIALIST TABARDS	11
RAIL TABARDS	32 - 33
AVIATION TABARDS	35

COVERT HARNESES

COVERT HARNESES	12
-----------------	----

SHIRTS

SHIRTS	13 - 14
FLAME RETARDANT SHIRT	17

JUMPERS & JACKETS

JUMPERS	15
WATERPROOF JACKETS	16
TECHNICAL JACKETS	38 - 39

TROUSERS

WATERPROOF TROUSERS	16
FLAME RETARDANT TROUSERS	17
AMBULANCE & MEDIC TROUSERS	40
WORK / UTILITY TROUSERS	41 - 42

COVERALLS

FR & POLYCOTTON COVERALLS	17 - 18
---------------------------	---------

UNDERWEAR

PROTEX UNDERWEAR	19
SLASH RESISTANT UNDERWEAR	20

SPIT GUARD PRO

SPIT GUARD PRO	21
----------------	----

TASER PRODUCTS

TASER PRODUCTS	23 - 24
----------------	---------

ACCESSORIES & BAGS

POC-KIT STRETCHER	22
HOLSTERS & BAGS	25 - 26
CAPS & BADGING	27

CUSTOMISE EVERYTHING

the ultimate
**TECHNICAL
WEAR**

UK design &
manufacture

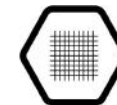
Custom made to
order



3M Scotchlite™
Reflective Material



COOL MAX®



Ripstop fabric

 **Reflexite**



BREATHABLE



MODEL | KEV0001 BLACK



MODEL | KEV0001 HI-VIS

**POLICE COMMUNITY
SUPPORT OFFICER**



MOLLEE CHASSIS | The original and still the best equipment vest that outperforms all others. Unique mollee chassis allows attachment and repositioning of role-specific equipment, including radio docket, asp downward draw, CS gas and cuff pouches. Internal X-Form load bearing system as standard, plus size adjustment for perfect fit. Custom pocket sets available across all GARMENTEC vests.



MODEL | KEV0072 BLACK
MOLLEE SEARCH VEST



MODEL | KEV0032 SKY
MOLLEE POLICE LIAISON VEST



MOISTURE MANAGEMENT



STAY COOL



MOLLEE SYSTEM

CUSTOM FABRICS | Tough, breathable and lightweight technical fabrics.
Pick a colour or pantone match to your corporate branding.





MODEL | 1591
KERMEL FR MOLLEE TAC VEST



MODEL | KEV0097
PRISON GUARD UTILITY WAISTCOAT



CUSTOM POCKETS | Choose from an assortment of pockets and pouches specifically for our unique **Mollee System**, which allows easy reconfiguration of attachments to your preferred arrangement. Minimal fuss, maximum flexibility.



MODEL | KEV0105 BLACK
UTILITY WAISTCOAT - DOG TEAM



MODEL | KEV0105 HI-VIS
UTILITY WAISTCOAT - DOG TEAM



**X-FORM
ANTI-STRESS
DESIGN**

Unique internal X-FORM support system distributes and supports carried weight. Quick and efficient sizing allowing up to 20cm of adjustment. Custom pockets, attachment points and fixings for Pava spray, ridged cuffs, docket for radio, camera, asp and glove. Features double retention shoulder adjustment and size adjustability to accommodate wearing over clothing layers such as shirt, jacket, body armour and coat.



MODEL | KEV0052 BLACK



MODEL | KEV0052 NAVY



OPERATIONAL WAISTCOAT | Custom UK designed in conjunction with Prison Service professionals to meet (and exceed) the demands of specific job roles. Custom pockets, fastenings and equipment attachments all positioned for optimal performance. Choose fabrics, colours, badging, sizing fit and body lengths.



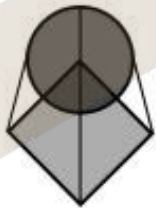
MODEL | 1590
MEDIC VEST



MODEL | 1594
OP SUPPORT / ROAD CRIME



MODEL | 1576
EVIDENCE GATHERERS



FORM & FUNCTION | Research, design, refine; the GARMENTEC mantra. Our equipment vests begin by understanding end usage. Partnering with professionals in the field to understand your challenges, GARMENTEC equipment vests are engineered innovative performance solutions, considered by many wearers to be a silent and trusted work partner.



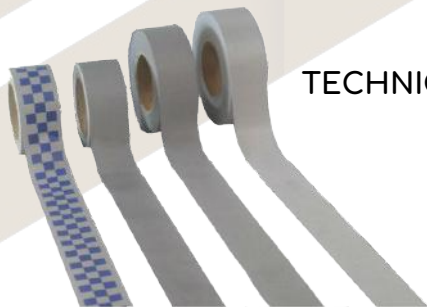
MODEL | 458
TRAFFIC TABARD



MODEL | 426
COVERT DISPATCH RIDER GILET



MODEL | KTA0002
INCIDENT COMMANDER



TECHNICAL TABARDS | Crafted to the same high standard as our Industry-leading equipment vests, GARMENTEC tabards are lightweight and durable. Hi-vis and reflective options, or customise with your corporate colours, badging and specialist tapes. Optional self-illuminating tape for 360 degree visibility in total darkness, no batteries required.



MODEL | 548
CORDURA COVERT HARNESS



MODEL | KCD0016
COVERT WAISTCOAT



MODEL | KCD0011
MOLLEE HARNESS



MODEL | 1592
SPACER COVERT HARNESS



CID HARNESSES | Developed in conjunction with UK Police Forces to carry most concealable personal protective equipment. Hard-wearing front panels with breathable stretch mesh backing. Moisture wicking fabrics, adjustable waist / trouser / belt straps secured by crocodile clips. Low bulk, low profile, light weight and maximum comfort covert harnesses.



MODEL | KPS0014
FUNNEL NECK S/S SHIRT



High wicking shirt in lightweight breathable stretch fabric. Choose embroidery on collar & sleeve, or plain. Radio & epaulette loops, with zipped & button fastening collars. Unisex sizing, available in white, navy & black. Long sleeve options also available.



MODEL | 803
COLLARED S/S SHIRT



Short sleeve collared shirt manufactured in a lightweight high-tech breathable fabric. Embroidered logo available to collar & sleeves. Extensive size range, with 9 sizes available. Long sleeve options also available.



MODEL | 831
KERMEL L/S WORK SHIRT



Funnel neck with concealed zip. High performance shirt ideal for firearms officers. Sleeves manufactured in FR Kermel fabric. Pair with our Kermel vest for high level protection. Bespoke embroidery & badging available. Matching Kermel trousers - Model 744.



MODEL | PILOT SHIRTS
COLLARED L/S SHIRT

Fused stand-up collar. Double-stitched side & sleeve seams. Single button cuff with one button placket. Two chest pockets with button down flaps. Pen holder left side pocket. Button down epaulettes to shoulders. Single needle stitched yoke & armhole. Single-stitched straight hem & cuffs. Easy care & iron. 55% mercerised cotton, 45% polyester poplin. Fabric weight 105gsm.



MODEL | POLO SHIRTS
COLLARED S/S PIQUE SHIRT

High quality classic fit polo with a modern edge, ideal for workwear. Made from quality ringpun combed cotton with a tighter piqué weave for a great fit, soft finish & excellent for logos & text customisation. Available in a wide range of colours. 100% ringpun combed cotton. Fabric weight 200gsm.



MODEL | PILOT SHIRT
COLLARED S/S SHIRT

Short sleeved pilot/security shirt with a stiffened collar & tabs for epaulettes on shoulders for those who need a more authoritative approach to workwear. Domestic wash at 40c. Wash dark colours separately. Wash inside out. 65% polyester, 35% cotton. Fabric weight 105gsm.



MODEL | 104
PATROL JUMPER

V Neck Jersey ideal for both winter & summer. A practical, reliable & durable garment with reinforced shoulder quarters & elbows, handy left sleeve pen pocket, & water resistant corded fabric that outperforms all conventional jumpers for shape retention & climate control. Radio loops & removable epaulettes, plus elasticated cuffs.



MODEL | KFL0001
TACTICAL FLEECE

Waterproof, windproof & breathable. Stay warm & dry with underarm ventilation ports & moisture wicking fleece fabric. High collar with central zip & easy-access pockets. Radio docket & shoulder badge loop. Ergonomic design for active functional fit.

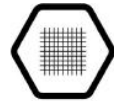


MODEL | 455
PATROL CARDIGAN

High performance jacket in stretch fabric that is soft, warm & dog hair resistant. Features include zipped pockets & windstopper elasticated cuffs. Epaulettes & radio docket. Perfect mid or outer layer. Custom badging options available.



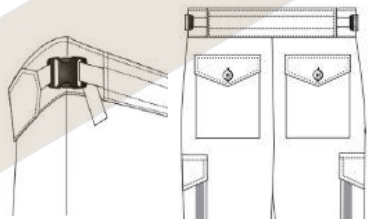
MODEL | 456
WATERPROOF SMOCK COAT



Ripstop fabric



MODEL | 746
RIPSTOP WATERPROOF TROUSER



**WATERPROOF
TACTICAL
CLOTHING**

High quality ripstop fabric jackets, jerseys and utility pants made for performance. Multi-pocket designs constructed using durable fabric with waterproof finish which is also fast drying. Features include elasticated hems, button closure pockets, zipped front, neck and waist fastenings. Action fit for all day comfort.



MODEL | 831
KERMEL L/S WORK SHIRT



MODEL | 744
KERMEL CARGO TROUSER



MODEL | 737
TACTICAL KERMEL JUMPSUIT

FR UNIFORM | High performance flame retardant technical garments for specific work roles. Designed and manufactured for unrivalled fit and functionality, Garmentec's FR Kermel and Nomex technical wear is widely used across HM Prison Service thanks to its excellent durability and value. Polycotton alternatives also available.





MODEL | KCL0007
NOMEX COVERALL



MODEL | KCL0003 SUIT & KEV0003 VEST
POLYCOTTON TRAINING COVERALLS & TRAINING VEST



COVERALLS | Rugged durable and safe thanks to proven Kermel and Nomex flame retardant fabrics. Features include large storage pockets to legs and arms for hands-free equipment carry, Inner leg zips for easy boots on / off, elasticated cuffs and waist, hooded option fit over helmet and respirator and folds into collar. Bespoke removable velcro badging.





MODEL | 9639
PROTEX COTTON FULL HEADOVER



MODEL | 9637
PROTEX COTTON L/S TOP



MODEL | 9633
PROTEX COTTON LONG JOHN



**UNDERWEAR &
BASE LAYERS**

| Protex cotton & Kermel fabrics are thermal yet inherently flame retardant. These properties make them ideal under garments and base layers, as well as affordable and safe solutions providing maximum comfort and full protection.



Cut-Tex PRO



MODEL | KAC0028
SLASH PROOF UNDER TROUSERS



MODEL | KAC0013 & KAC0014
CUT RESISTANT UNDERPANTS
& ARM PROTECTORS

**CUT & SLASH
RESISTANT
UNDERWEAR**

Cut and slash resistant fabric produced in the UK to withstand over 30N (3000 grams) of force. Exceeds ISO13997:1999 Standard, achieving 5 Star protection on the Kevlar blade cut resistance scale (where most other products are only Level 2 or 3). Protects the body from sharp edge lacerations. Industry-leading design and protection.



MODEL
KAC0052
SPIT GUARD
POUCH



SPIT GUARD PRO



MODEL | **KAC0061**
SPIT GUARD (BLACK & IVORY)



SPIT GUARD PRO

The **SPIT GUARD PRO** provides unrestricted eye contact reduces panic & avoids escalation of situation. A humane solution to spitting individuals in custody. Full protection against dangerous and contagious diseases. Quick and easy to apply. Can't be removed or repositioned by wearer. Avoids blocked airway and asphyxiation through ingest of fluids or solids. Expelled liquids or materials are safely contained inside mask for hygienic disposal. Approved by MET Police Medical Director for use by UK Police.



MODEL | 966
POC-KIT STRETCHER



POC-KIT STRETCHER | Multi-purpose stretcher made of strong and foldable microlight technical fabric. Low bulk, easy to carry and reusable stretcher, ideal for fast evacuation of people as well as carrying equipment. Ideal for mountain rescue. Reusable, compact and available in black.



MODEL | KSH0002
TASER SHORTS



MODEL | KJK0005 & KTR0007
TASER SUIT



**TASER TRAINING
SUIT & SHORTS**

The first of its kind, providing total protection from taser shots. Designed, built and tested in partnership with UK Police, this suit allows full range of body movement and full protection during taser deployment training. Size adjustable and reusable. Taser Protection Shorts feature full groin coverage, 3D stretch fabric and are washable.



MODEL | **EP15B**
TASER CARRIER



MODEL | **EP24**
TASER LEG HARNESS



**TASER CARRIER
& LEG HARNESS**

| Secure taser gun carriage pouch with internal gun dock, strap and press-stud fastening. YKK zip closure system with rear straps for mollee and leg harness systems. Hard-wearing ripstop fabric for durability and lightweight performance.



MODEL | KAC0044B
FIRE EXTINGUISHER HARNESS



MODEL | KAC0047
ROPE LEG HARNESS



MODEL | KAC0046
MOLLEE THIGH RIG

MOLLEE THIGH RIG & HARNESSES



Leg harnesses give easy access to equipment held securely in place by durable straps with quick-release buckles. Carry rope, ammo, equipment and tech, supplies and tools. Fire extinguisher harness suits Firemark and Fireblitz 1-1.5 kilo extinguishers. Elasticated thigh strap plus webbing strap which secures to belt. Specifically fits portable hand-held extinguishers. Developed, trialled and in current use with UK Police.



MODEL | GT28
EPIC MULTI KIT BAG



MODEL | 993
FIRST AID MEDIC BUM BAG



MODEL | GT24
KIT BAG



MODEL | 1924
UTILITY BELT



MODEL | 997
COVERT GLOCK BUM BAG



MODEL | 1928
COVERT NUMBER PLATE POUCH



MODEL | 9612
BRUSHED BASEBALL CAP



MODEL | BUMP CAP
HARD SHELL BASEBALL CAP



MODEL | 911
PANZER CAP

PANZER & BASEBALL CAPS

The GARMENTEC Panzer Cap (model 911) is designed for covert situations and can be scrunched up to fit in a pocket prior and after use. Manufactured in black or hi-vis yellow, with checker tape and stretch back. Options: 911A/B: Black Police, 911A/Y hi-vis Police, 911B/Y hi-vis Customs. Our Brushed Baseball Cap (model 9612) is manufactured in heavyweight brushed cotton and can be embroidered as follows: 9612A - Dog Section, 9612B - Plain, 9612C - Police, 9612D - K9.



BESPOKE BADGING

CUSTOM BADGING & EPAULETTES

Options include colours, threads, fonts, names, numbers, job role, size and shape. Available to order as embroidered, encapsulated and heat-applied options.



MODEL | KEV0144



MODEL | KEV0138



MODEL | KEV0092



MODEL | KEV0140



MODEL | KEV0031



MODEL | KEV0124

ULTIMATE EQUIPMENT VESTS



UK design and high quality manufacture ensures our equipment vests lead the Industry. Featuring a unique internal X-FORM support system, the weight of carried equipment is spread ergonomically around the body. The X-FORM system reduces fatigue and provides easier access to all carried tools, tech and gadgets. Each GARMENTEC vest is expertly constructed using lightweight, breathable and durable fabrics, with custom pockets, docket, anchor points and bespoke corporate and name / job role badging options.





MODEL | KEV0144



MODEL | KEV0034



MODEL | KEV0060
BODY CAMERA



MODEL | KEV0041



MODEL | KEV0150



MODEL | KEV0124

FEEL
MORE
FREE



GARMEN TEC bespoke tabards and equipment vests improve wearer comfort, reduce fatigue and deliver greater functionality. Years of R&D and testing 'in the field', in conjunction with Industry professionals, ensures our vests far exceed the 'fit for purpose' standard. Our quality guarantee assures the best fitting and most durable work vests with unrivalled freedom of movement to the X-FORM anti-stress system. Customise with your choice of colours, reflective and glow-in-the-dark tapes (no batteries required) and enjoy the benefits of high performance work vests.





MODEL | KEV0116



MODEL | KEV0133



MODEL | KEV0004M

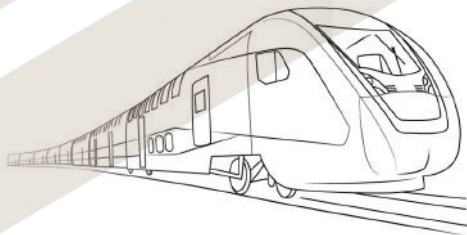


MODEL | KEV0004M



MODEL | KEV0103

RAIL VESTS | Hard wearing equipment vests constructed using the best materials. Features lightweight washable fabrics, hi-vis tape, epaulettes, custom badging, plus a choice of colours and fits. Optional self-illuminating tape for 360 visibility in low light conditions (no batteries required). Pocket and attachment solutions.





MODEL | KEV0044



MODEL | KEV0103



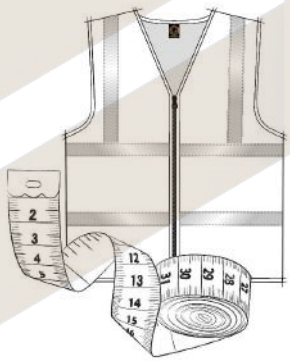
MODEL | KEV0106



MODEL | KEV0009VR



MODEL | KEV0100



RAIL VESTS | Technical tabards constructed to the same high standard as our Industry-leading equipment vests. Details and features not found on lesser 'standard' tabards, such as pockets, hard-wearing breathable fabrics and customised corporate branding.



MODEL | KTA0009



DAY

NIGHT

MODEL | KTA0010
GLOW IN THE DARK TABARD

MODEL | KTA0001

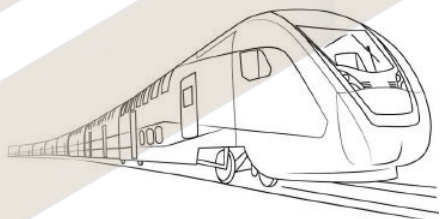


MODEL | KTA0003



MODEL | KTA0008

RAIL TABARDS | GARMENTEC tabards are designed to outperform all others. With technical fabrics, custom badging, reflective tapes, heat-applied logos and name / job role badging. Also available with machine washable glow-in-the-dark phosphorescent tape which shines bright in total darkness and is self-charging (no batteries required).





MODEL | KTA0017
(REVERSIBLE ORANGE)



MODEL | KTA0017
(REVERSIBLE LILAC)



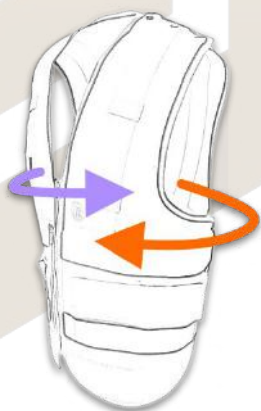
QUICK-RIP
SHOULDER



EASY PRESS-STUD
RELEASE



FAST RELEASE
SIDE FASTENING



REVERSIBLE TABARD

Double the functionality of your work vests with these reversible tabards. Quick release press-stud shoulder and side fastenings for extra safety. Available with all the same technical features as other Garmentec vests, including pantone matched fabrics, custom logos, badging and tapes.



MODEL | KEV0122



MODEL | KEV0101



MODEL | KEV0054



MODEL | KEV0102



MODEL | KEV0079

EQUIPMENT CARRIAGE VESTS



Custom ticket machine pocket system allows convenient operation of printer in all weather conditions. The ticket pocket protects the machine from the elements and supports the weight by distributing it ergonomically thanks to our unique X-FORM chassis. Choose your colours, fabrics, additional pockets and attachment points, plus ID display windows and badging. Benefit from our technical workwear solutions.





MODEL | KTA0014



MODEL | KEV0146

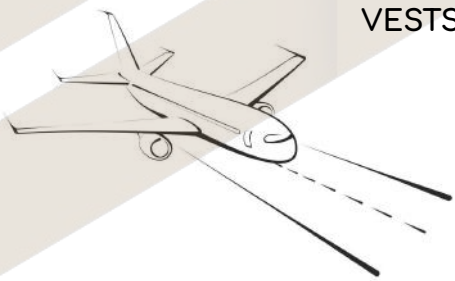


MODEL | KEV0124



MODEL | KTA0015

TECHNICAL VESTS



Designed and manufactured to the same high specification as our Industry-leading X-FORM equipment vests, GARMENTEC technical tabards are built to outperform all other alternatives. Using lightweight, breathable and durable fabrics, combined with custom pockets, docks, tool and tech anchor points, plus reflective / glow-in-the-dark tapes (no batteries required), wearers consider GARMENTEC vests to be dependable work partners.





MODEL | 1538



MODEL | KEV0057H



MODEL | KEV0057



MODEL | KEV0144



MEDIC VESTS | Hard wearing equipment vests constructed using the best materials. Features lightweight washable fabrics, hi-vis tape, epaulettes, custom badging, plus a choice of colours and fits. Optional self-illuminating tape for 360 visibility in low light conditions (no batteries required). Pocket and attachment solutions.



MODEL | KEV0128



MODEL | KEV0153
BID VEST



MODEL | KEV0146
BACKLESS WORK VEST



MODEL | KEV0060



MODEL | LIFE VEST
2-IN-1 EQUIPMENT VEST



SPECIALIST CUSTOM VESTS

What are the benefits of Garmentec's custom made equipment vests? Simply put... better fit, function and durability, with stronger professional corporate identity. Our equipment vests provide freedom of movement and the best load support to allow each wearer to feel more free when working hard, all day, every day. They are "fit for purpose".





MODEL | GT017
TECHNICAL SOFTSHELL JACKET

Mechanical stretch & articulation at shoulders & elbows. Ultra-durable H2XTREME® waterproof / breathable fabric. Bonded grid fleece backing with superior thermal & moisture wicking properties. Chest & ergonomic hand pockets. Attached hood, YKK Aquaguard zippers & audio port. Fabric: 95 Nylon, 5% Spandex ripstop. Bonded with 100% Polyester grid microfleece. Weight: 305gsm.



MODEL | GT3214
HI VIS BOMBER JACKET

High visibility bomber jacket with stow away hood & full quilt lining. Conforms to EN20471 Class 3, with Level 2 Glass bead silver reflective tape & "Reflexite" Prismatic green chequer tape. Fully waterproof 300D PU Polyester breathable fabric. Fixed epaulettes, dropped back hem, ribbed storm cuffs & side zips. Window pockets on chest, radio loops. Left sleeve double pen pocket. Right sleeve zipped pocket.



MODEL | GT-NIMB
ALL WEATHER JACKET

An all-weather style conscious parka, with clean & functional details that give a smart classic look. Protective, sophisticated & warm, even on snowy days. 100% polyester twill. Wind & water repellent Bionic Finish® ECO. Lining & padding 100% polyester. TPU membrane, water resistance 3000mm, breathability 3000g/m²/24h. Critically taped seams.



MODEL | GT029
HI-VIS STORM WINTER JACKET

Fabric: 100% polyester, Fontaine check 300D. Waterproof & breathable with removable pile liner. Twin stitched reflective tapes. Chest pocket, concealed ID card holder & radio loop. Fleece lined two way bottom pockets & zips under hook & loop storm flap. Pen & mobile phone pockets. Concealed removable hood. Adjustable drop tail bottom. Compliant to EN ISO20471 Class 3 & EN342:2004 (orange conforms to RIS-3279-TOM for railway industry).



MODEL | GT045
HI-VIS MOTORWAY JACKET

Fabric: 100% polyester, 300D outer, 190gsm padding. Conforms to EN ISO471:2013 Class 3 & EN343 against foul weather. Orange also conforms to RIS-3279-TOM. Waterproof PU coated. Quilted padding & nylon lining. Heavy-duty zip with studded storm flap. 2 outer pockets with storm flaps. Knitted storm-cuff to sleeves. Concealed hood with drawcord adjuster. Inside breast pocket. Fully stitched & taped seams to ensure waterproof. Matching trousers available.



MODEL | GT035
HI-VIS FLIGHT JACKET

Fabric: Ripstop Fontaine check polyester, 350gsm. Compliant to EN ISO20471 Class 3 & EN342:2004 (orange to RIS-3279-TOM for Railway Industry). Very fine check fabric is waterproof & breathable. Soft-touch removable sherpa pile liner. Twin-stitched 5cm retro-reflective tapes. Chest pocket, radio loop & concealed ID card holder. Removable concealed hood & elasticated waist.



MODEL | **GT887**
ACTION TROUSERS

Fabric: Kingsmill 65% polyester, 35% cotton, 245gsm.
Superior comfort & functionality.
Outstanding value, strong industrial colours & a wide range of size & length options.
Features 11 pockets - multiple with zips, reinforced fabric at seat & knee areas, with optional knee pads.
40+ UPF fabric block 98% UV rays.



MODEL | **GT2085**
WAKEFIELD TROUSERS

Fabric: Kingsmill 65% polyester, 35% cotton, 300gsm.
Tough poly-cotton fabric for comfort & durability. Features include a sewn in front crease & hook & bar closure. Jetted back pocket, 3 pockets for ample storage.
50+ UPF rated fabric to block 98% of UV rays.
Available in regular & tall leg lengths.



MODEL | **GT918**
BALLISTIC TROUSERS

Fabric: Kingsmill 65% polyester, 35% cotton, 245gsm.
Top quality & durable poly-cotton trouser. Ballistic nylon panels to outer legs protect against glass, metal & other sharp materials. Two reflective bands to lower leg. 4 pockets (2F, 2R) & elasticated back waist.
CE certified.
40+ UPF fabric blocks 98% of UV rays.



MODEL | GT073
CARGO TROUSERS

Fabric: 80% polyester, 20% cotton, 245gsm.
Super popular cargo with knee pad pockets. Treated with durable water repellent finish. 3M® reflective tape, part elasticated waist & 2 cargo pockets.
Hidden access for knee pads.
Extra hi-viz tape on the pockets.
Four colourways to choose from.



MODEL | GT012
STRATEGIC TROUSERS

Fabric: 96% polyester, 4% elastane. 270gsm.
Warm-backed woven stretch softshell. CORDURA® fabric. Top loading knee pad pockets, 2 foldaway 'Holster' pockets with multiple compartments. Multi pocketed legs - 2 F, 2 R, 1 zipped back pocket, plus 1 cargo pocket. Shaped high back waistband. Triple stitched seams & reinforced crotch seam.



MODEL | GT010
HEROIC TROUSERS

Fabric: 35% cotton, 65% polyester, 245gsm.
Hardwearing CORDURA® fabric.
Bottom loading knee pad pockets.
2 front pockets, 2 rear pockets & 2 lower cargo leg pockets & 1 concealed zipped pocket. Triple stitched seams & reinforced crotch seam.
Available in grey, black & blue.



MODEL | **GT334**
COMBAT TROUSERS (GT701)

Fabric: Kingsmill, 245gsm.
Modern-day work trouser constructed from rugged pre-shrunk Kingsmill fabric. Multiple utility pockets, hook & loop flaps for added security.
UPF rating of 50+.



MODEL | **GT232**
NEW ACTION TROUSERS (GT330)

Fabric: polycotton, 170gsm.
Water-repellent finish. Part-elasticated waist. Knee patches. Belt loops. Multi pocketed with concealed zips. 2 front large pockets with hem bellows. Right zipped pocket with welt covering. 2 back pockets - one zipped pocket with welt covering.



MODEL | **GT013**
SCANDAL STRETCH TROUSERS

Fabric: 98% cotton, 2% elastance, 270gsm.
Stretch CORDURA® fabric. Bottom loading knee pad pockets. 2 front pockets, 2 rear pockets, 1 concealed zipped pocket & 1 cargo leg pocket. Triple stitched seams & reinforced crotch seam.
Available in black or dark khaki.

GARMENTEC

CONTACT US

Telephone

0114 279 8136

Email

sales@garmentec.co.uk

Address

Garmentec, International House,
Nunnery Drive, Sheffield, S2 1TA, England, UK.

GARMENTEC.CO.UK